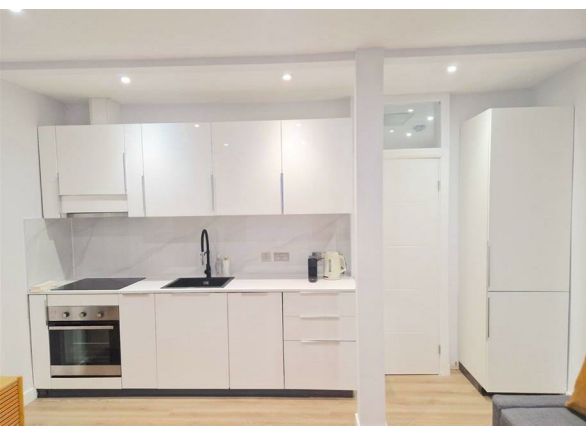
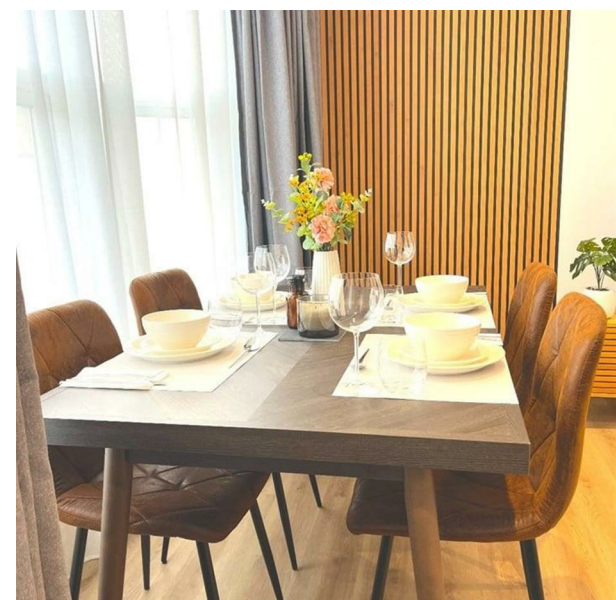



131 Blackhorse Lane, London, E17 6DJ
£2,200 (From) Per Month

COMPLETION
SALES & LETTINGS





131 Blackhorse Lane, London, E17 6DJ

£2,200 (From) Per Month

Council Tax Band: B

We are pleased to present this charming two-bedroom upper floor flat located on Blackhorse Lane in the vibrant area of Walthamstow, E17. Available to let at a competitive price of £2200 per calendar month, this property offers a comfortable living space ideal for professionals or small families.

Spanning an area of 538 square feet, the flat features a well-proportioned reception room that provides a welcoming atmosphere for relaxation and entertaining. The two bedrooms are thoughtfully designed, offering ample space for furnishings and personal touches. The property also includes a modern bathroom, ensuring convenience and comfort for its residents.

Situated in a lively neighbourhood, this flat benefits from excellent transport links, making it easy to access central London and beyond. Walthamstow is known for its diverse community, with a variety of shops, restaurants, and parks nearby, providing a perfect blend of urban living and green spaces.

This upper floor flat is an excellent opportunity for those seeking a stylish and practical home in a sought-after location. Do not miss the chance to make this delightful property your new residence.







337 Forest Road
London
E17 5JR
02085277007
enquiries@completion.co.uk
completion.co.uk

